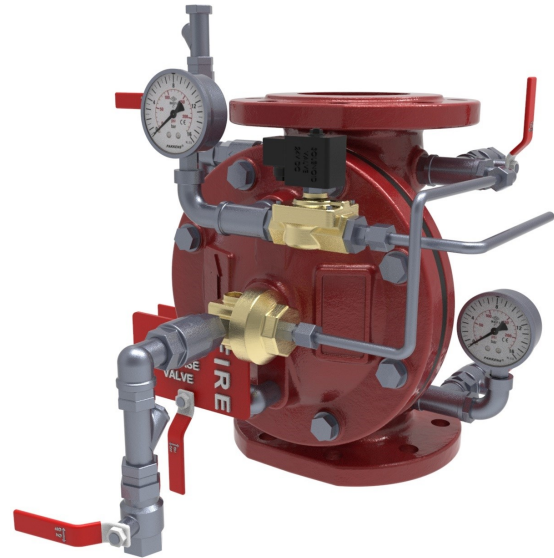




DELUGE VALVE (ELECTRICAL ACTIVATED)



Description

Electrically Activated Deluge hydraulic control valves are automatic control valves used in fire fighting systems. The electrically actuated Deluge control valve is a wet deluge alarm valve used in wet pipe sprinkler systems.

Properties

- * Deluge valve operates fully hydraulically with mains pressure.
- * The valve works fully automatically thanks to the solenoid valve mounted on it.
- * The emergency release valve on the valve, the main valve provides manual on-off function.
- * The cut-off trims mounted on the main valve, alarm bell, flow switch, pressure switch etc. equipment can be easily installed.
- * Main valve is very easy to maintain and use.
- * There are manometers on the main valve that show the valve inlet pressure and the actuator pressure.
- * The voltage value of the solenoid valve is 24 Volt DC. Valves with different voltage values can be used upon request.

Available Products

Diameter	1,5"-DN 40	2" - DN 50	2,5" - DN 65	3" - DN 80	4" - DN 100	5"- DN 125	6" - DN 150	8" - DN 200
Product Code	D-DLG40	D-DLG50	D-DLG65	D-DLG80	D-DLG100	D-DLG125	D-DLG150	D-DLG200
Product Code	G-DLG40	G-DLG50	G-DLG65	G-DLG80	G-DLG100	-	G-DLG150	G-DLG200



DELUGE VALVE (ELECTRICAL ACTIVATED)

CONTROL VALVE TECHNICAL SPECIFICATIONS

CONTROLVALVE	1. Model	D-DLG	G-DLG	
	2. Type	Strait flow, Globe type		
	3. Description	An automatic, solenoid controlled valve. The valve will close drip tight when the solenoid is energized and will open when the solenoid de-energized.		
	4. Size	2", 3", 4", 6", 8"		
	5. Kv	See table next page		
	6. Length	See table next page		
	7. Weight	See table next page		
SERVICE CONDITIONS	8. Line Pressure	Min. opening: 1 bar \ 15 psi Max.: 25 bar \ 360 psi		
	9. Flow	See table next page		
	10. Temp.	0 – 80° C \ 32 - 176° C		
	11. Fluid type	Fire Water		
PARTS & MATERIALS	12. Main valve	Body & Cover: Ductile Iron GGG-40 (G-DLG)	Diaphragm: Reinforced EPDM	
		Body & Cover: Cast Iron GGG-40 (D-DLG)		
		Spring: N\A		
		Coating: Electro-statically applied, oven backed Polyester (RAL 3002)		
	13. Solenoid	TYPE: Pilot operated diaphragm type		
		Body & Cover: Brass	Plug: Brass + NBR	
		Spring: SST Orifice : 12 mm Rating : 24 V DC 17W	Diaphragm: NR Enclosure : IP 65 Actuation : Energized to open	
	14. Accessories	Control Filter	Type: 1/2" "Y" pattern	
			Screen: SST	
		Body: Brass		
Cock valves		Ball: SST		
	Body: Brass			

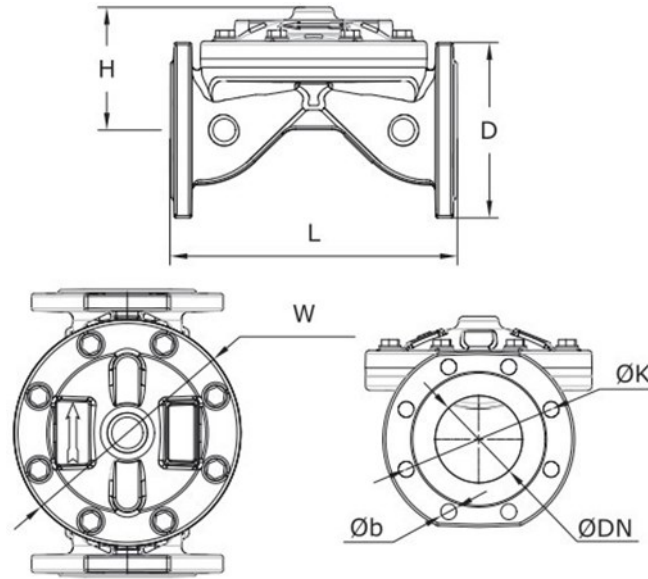


2000 SERIES DLG MODEL

DELUGE VALVE (ELECTRICAL ACTIVATED)

SIZE&WEIGHT

MODEL : D-DLG



SIZE AND WEIGHT TABLE

	mm	inch	mm	inch	mm	inch	mm	inch	mm	inch	mm	inch	mm	inch
DN	50	2"	65	2,5"	80	3"	100	4"	125	5"	150	6"	200	8"
D	165	6 ¹ / ₂	185	7 ⁹ / ₃₂	200	7 ⁷ / ₈	220	8 ²¹ / ₃₂	250	9 ²⁷ / ₃₂	285	11 ⁷ / ₃₂	340	13 ²⁵ / ₆₄
H	105	4 ⁹ / ₆₄	110	4 ²¹ / ₆₄	125	4 ⁵⁹ / ₆₄	145	5 ⁴⁵ / ₆₄	227	8 ¹⁵ / ₁₆	244	9 ³⁹ / ₆₄	272	10 ⁴⁵ / ₆₄
L	225	8 ⁵⁵ / ₆₄	250	9 ²⁷ / ₃₂	305	12 ¹ / ₆₄	330	12 ⁶³ / ₆₄	380	14 ⁶¹ / ₆₄	400	15 ³ / ₄	450	17 ²³ / ₃₂
K	125	4 ⁵⁹ / ₆₄	145	5 ⁴⁵ / ₆₄	160	6 ¹⁹ / ₆₄	180	7 ³ / ₃₂	210	8 ¹⁷ / ₆₄	240	9 ²⁹ / ₆₄	295	11 ³⁹ / ₆₄
W	165	6 ¹ / ₂	185	7 ⁹ / ₃₂	220	8 ²¹ / ₃₂	250	9 ²⁷ / ₃₂	320	12 ¹⁹ / ₃₂	320	12 ¹⁹ / ₃₂	320	12 ¹⁹ / ₃₂
B	19	0 ³ / ₄	19	0 ³ / ₄	19	0 ³ / ₄	19	0 ³ / ₄	19	0 ³ / ₄	23	0 ²⁹ / ₃₂	23	0 ²⁹ / ₃₂
Ağırlık	13 kg	29 lbs	16 kg	35 lbs	21 kg	46 lbs	27 kg	60 lbs	45 kg	103lbs	48 kg	105lbs	76kg	165lbs

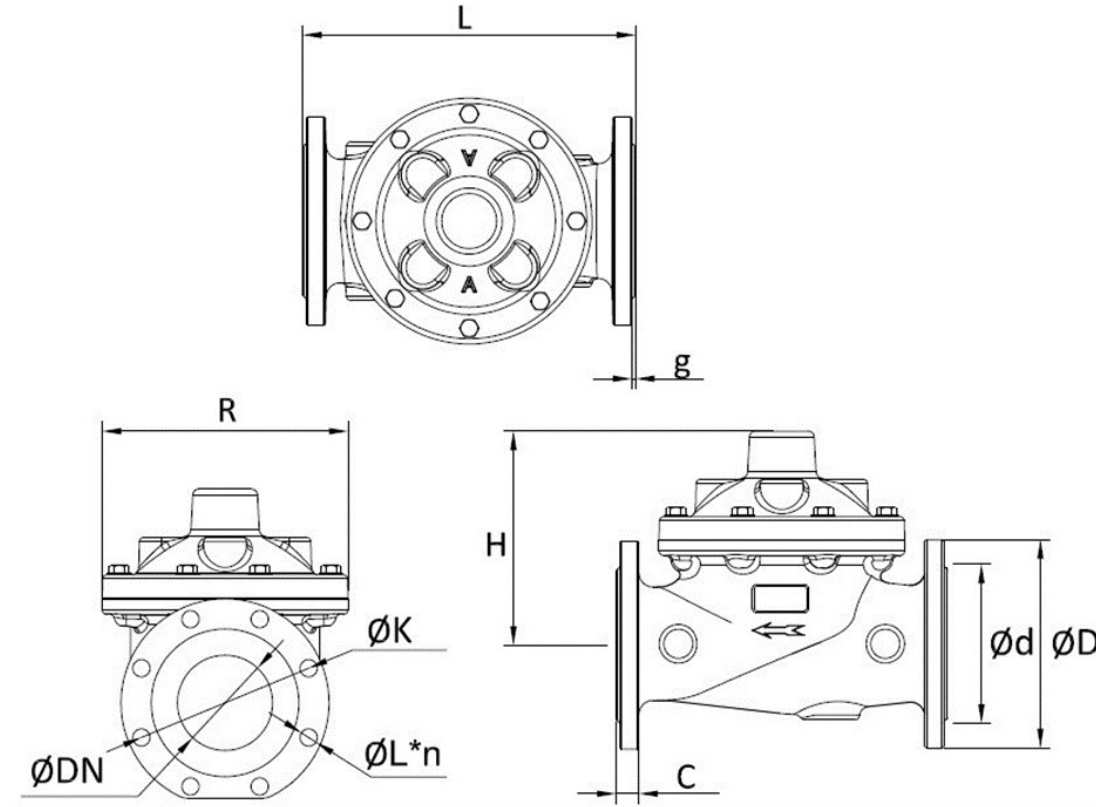


2000 SERIES DLG MODEL

DELUGE VALVE (ELECTRICAL ACTIVATED)

SIZE&WEIGHT

MODEL : G-DLG



ØDN	50 - 2"		65 - 2½"		80 - 3"		100 - 4"		150 - 6"		200 - 8"	
	mm	inch	mm	inch	mm	inch	mm	inch	mm	inch	mm	inch
PN16												
ØD	165	6 ½	185	7 9/32	200	7 7/8	220	8 21/32	285	11 7/32	340	14 25/64
ØK	125	4 59/64	145	5 45/64	160	6 19/64	180	7 3/32	240	9 29/64	295	11 39/64
Ød	99	3 57/64	118	4 41/64	132	5 13/64	156	6 9/64	211	8 5/16	266	10 15/32
ØL* n	19*4	¾	19*4	¾	19*8	¾	19*8	¾	23*8	29/32	23*12	29/32
g	3	1/8	3	1/8	3	1/8	3	1/8	3	1/8	3	1/8
L	240	9 29/64	280	11 1/32	310	12 13/64	345	13 31/64	480	19 57/64	560	22 3/64
H	185	7 9/32	200	7 7/8	220	8 21/32	240	9 29/64	330	13 63/64	385	15 5/32
C	21	53/64	21	53/64	23	29/32	23	29/32	25	63/64	27	1 1/16
R	175	6 57/64	200	7 7/8	220	8 21/32	260	10 15/64	360	14 11/64	400	15 3/4
Weight	15	33	22	48	26	57	38	83	77	169	138	304
Kg-lbs	Kg.	Lbs	Kg.	Lbs.	Kg.	Lbs.	Kg.	Lbs.	Kg	Lbs.	Kg.	Lbs



2000 SERIES DLG MODEL

DELUGE VALVE (ELECTRICAL ACTIVATED)

FLOW FACTOR

MODEL : D-DLG

RECOMMENDED WORKING CONDITIONS						
DIAMETER		FLOW RATE m ³ /h			Kv	
mm	inch	Minumum	Maksimum	m ³ /h	l/s	
50	2	1	40	66	18.3	
65	2,5	1	45	75	20.8	
80	3	2	85	141	39	
100	4	3	105	175	48.6	
125	5	10	285	475	132	
150	6	12	310	516	143	
200	8	40	480	800	222	

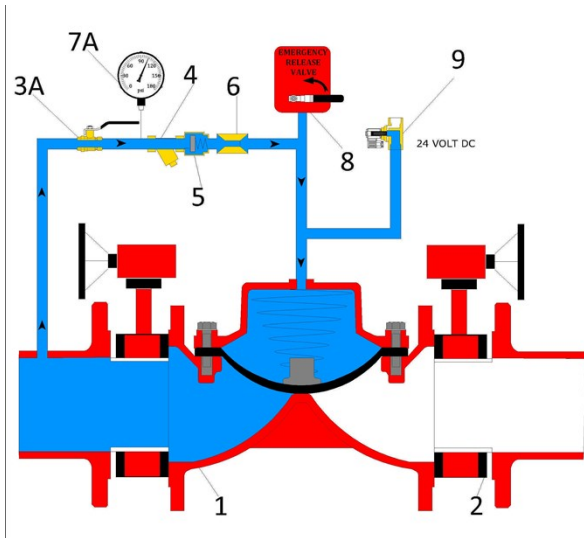
FLOW FACTOR

MODEL : G-DLG

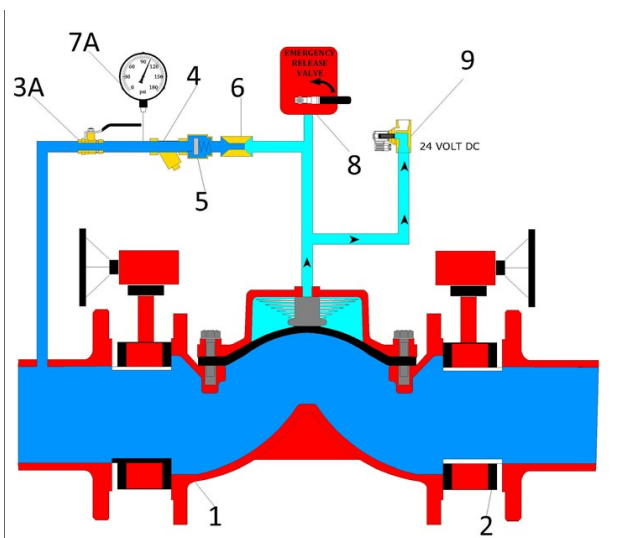
Diamters		50mm	65mm	80 mm	100 mm	150 mm	200 mm
Kv	Flow Coefficient m ³ /h	45	62	100	174	412	658
Cv	Flow Coefficient gpm	52	72	116	203	481	769
K	Valve Resistance Coefficient	4.8	7.4	6.4	5.1	4.8	5.8

DELUGE VALVE (ELECTRICAL ACTIVATED)

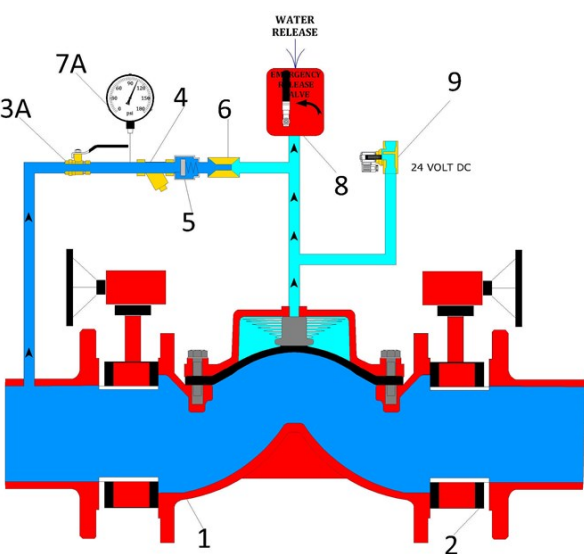
OPERATION PRINCIPLE



Valve Closed



Electrical Activation



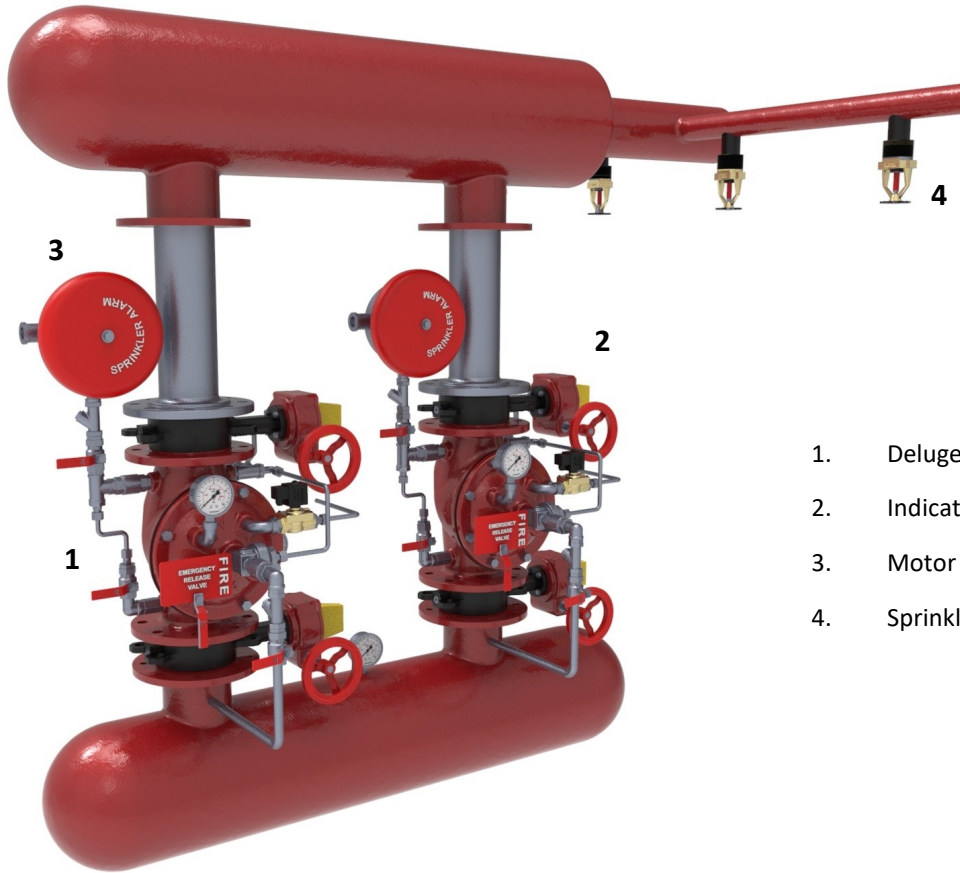
Manual Opened

- * The main valve can be installed in the system in horizontal and vertical positions.
- * Use an isolation valve (butterfly valve or gate valve) before the main valve.
- * Connect the ball valve inlet indicated with "3" on the main valve to the main line.
- * Properly connect the solenoid valve located on the main valve trim to the controller.
- * The main valve body is in the normally closed position. In order to open the main valve body, give an electrical signal on the solenoid valve or use the emergency relief valve.
- * The main valve operates with system pressure (minimum 29 psi). Check the line pressure at regular intervals so that the main valve can perform its on-off function.

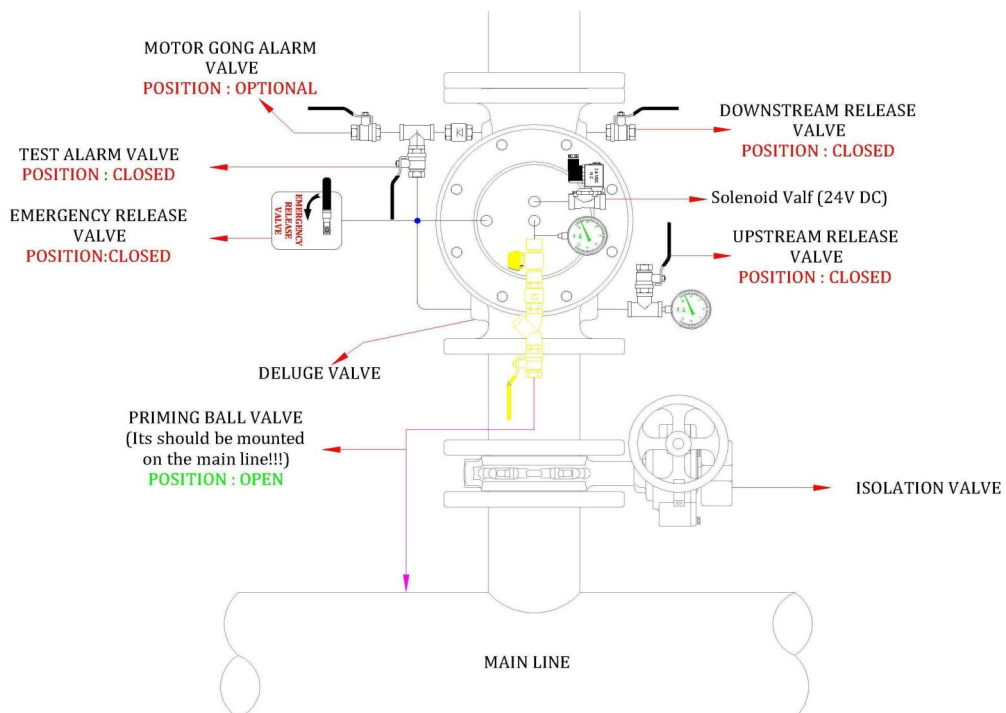


DELUGE VALVE (ELECTRICAL ACTIVATED)

ÖRNEK MONTAJ



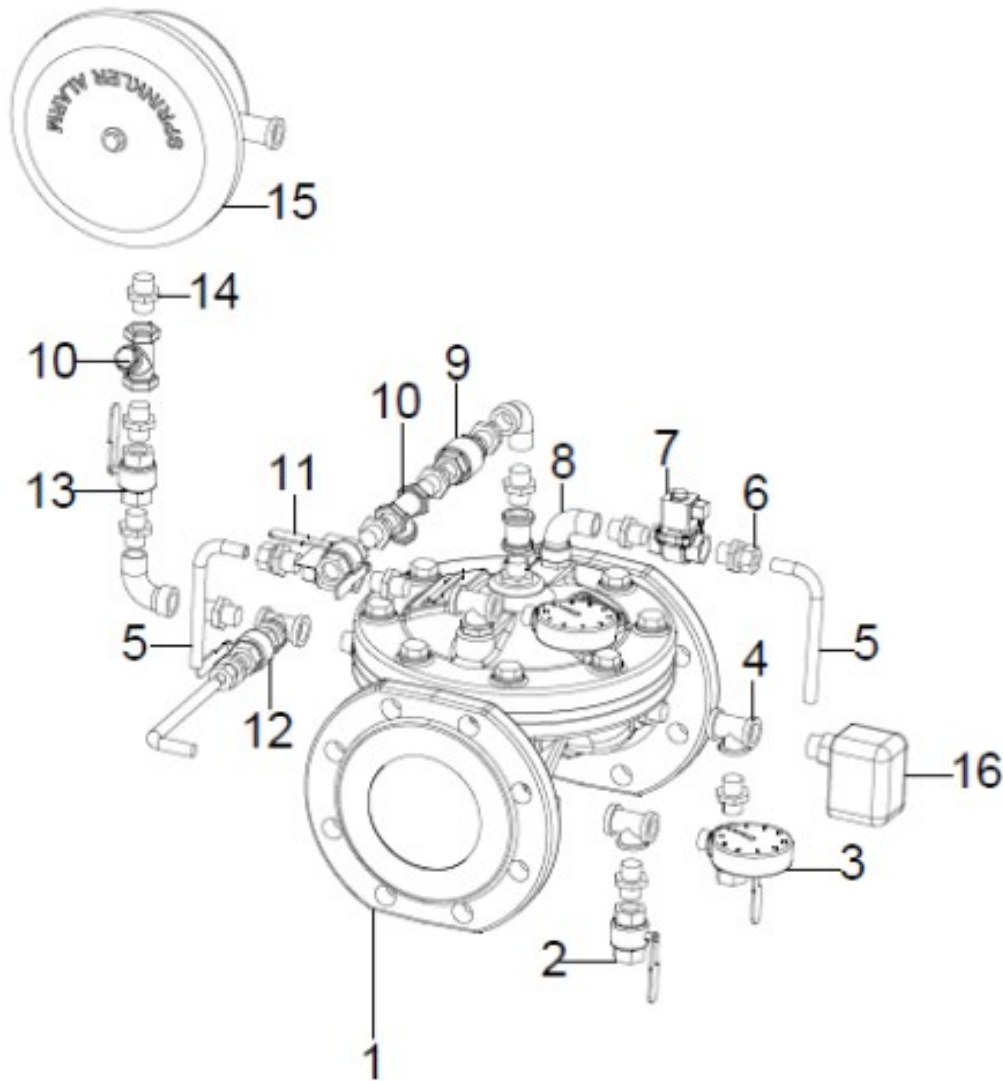
1. Deluge Valve
2. Indicated Butterfly Valve
3. Motor Alarm Gong
4. Sprinklers





DELUGE VALVE (ELECTRICAL ACTIVATED)

TRIM SET I



NO	MATERIAL	NO	MATERIAL
1	Deluge Valve(D Type& G Type)	9	1/2" Check Valve
2	1/2" Drain Valve	10	1/2" Strainer
3	Pressure Gauge	11	1/2" Emergency Valve
4	1/2" Tee	12	1/2" Test Valve
5	Coper Drain Pipe	13	1/2" Isolation Valve
6	1/4" Nipple	14	1/2" Nipple
7	Solenoid Valve 24VDC	15	Motor Alarm Gong (Optional)
8	1/2" Elbow	16	Pressure Switch (Optional)