

ALARM PRESSURE SWITCHES

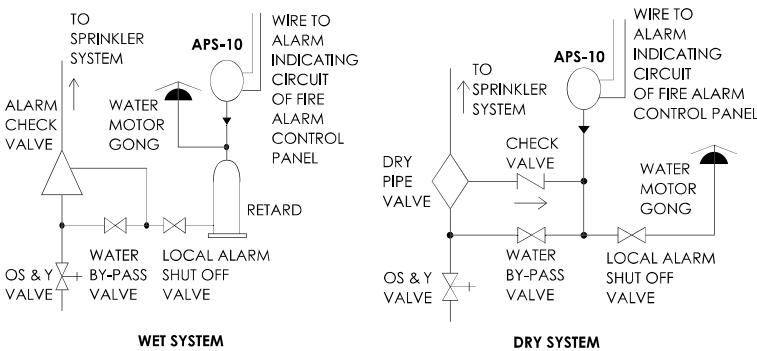
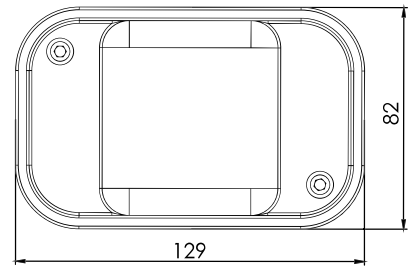
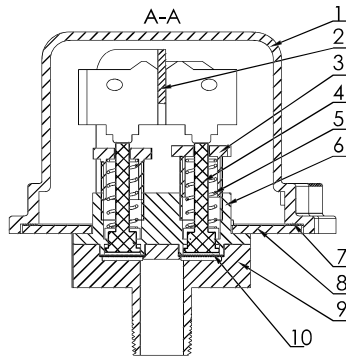
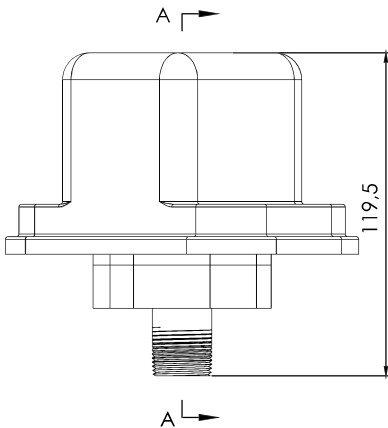
Pressure Switch / Model APS-10



APS-10 switches are designed for use in wet, dry, deluge, and pre-action automatic sprinkler systems to indicate a discharge from a sprinkler.

Specifications

- Service Environment** : Indoor or Outdoor use, all parts have corrosion resistant finishes (IP65)
- Temperature Range** : -10°C - 80°C (14° F- 176° F)
- Cover Tamper** : Tamper Resistant Screws (Optional Cover Tamper Switch Available)
- Electrical Ratings** : 15 Amps at 125/250VA
- Connection** : 1/2" NPT Threaded
- Pressure Adjustment Range** : 4 - 20 PSI
- Max Working Pressure** : 175 psi (1200kPa)



MATERIAL LIST		
NO	PART	STANDARD SPECIFICATION
1	Outer Shell	ADC12
2	Micro Stents	Q235
3	Regulating Accessories	PA66+GF30
4	Stem	PA66+GF30
5	Compression Spring	65#
6	Connecting Base	PA66+GF30
7	Sealing Washer	CR Foam Cotton
8	Back Shell	ADC12
9	Pedestal	PA66+GF30
10	Pressure Diaphragm	EPDM

Typical Electrical Connection

